



Acme Sanitary Ware Co. Ltd.


1/F, Acme Building, 22-28 Nanking Street, Kowloon, Hong Kong
Tel: 2388 7171 Fax: 2710 8012
Email: acme@acmesanitary.com.hk
Website: www.acmesanitary.com.hk

SLOAN®

PROJECT		REF		REV	ITEM CODE	
LOCATION		DATE			PAGE	

SANITARY WARE SPECIFICATION SHEET

Item Descriptions	Sloan (USA) "BASYS" Battery-powered deck-mounted low body faucet, 0.5gpm/2Lpm, multi-laminar spray, DC supply	Illustration/ Drawing
Dimensions	Refer to drawing	
Model	EFX350.000.0000	
Finish	Polished Chrome	
Manufacturer	Sloan (USA Brand)	
Source	Acme Sanitary Ware Co. Ltd Mr. Eric Wong/ Mr. Don Yuen	
Contact Tel/Fax	(852) 2388-7171 / (852) 2710-8012	
E-mail	acme@acmesanitary.com.hk	
Website	www.acmesanitary.com.hk	
CODE NUMBER	3324037	
DESCRIPTION	Battery Power Supply, Mixer Not Included, Polished Chrome Finish, 0.5gpm, Multi-Laminar Spray, Infrared Sensor, BASYS® Battery-Powered Deck-Mounted Low Body Faucet.	
DETAILS	<ul style="list-style-type: none">Flow Rate: 0.5 gpm (2 Lpm) (0.5GPM)Spray Type: Multi-Laminar (MLM)Sensor Type: Infrared (IR)Mounting Type: Single HolePower Supply: Battery (BAT)Temperature Mixer: Mixer Not IncludedFinish: Polished Chrome (CP)Factory Default Timeout: 10sFactory Default GPC: 0.083  <p>Battery A good option for retrofit environments or installations where hardwiring is not an option.</p> <p>COMPLIANCES & CERTIFICATIONS</p> 	  

Note:  <https://vimeo.com/149812365>
<https://vimeo.com/149812363>

* All information of the above is for the reference only. No prior notice is made if any changes.



PROJECT		REF		REV	ITEM CODE	
LOCATION		DATE			PAGE	

SANITARY WARE SPECIFICATION SHEET

FEATURES

Commercial Grade, ADA Compliant, Electronic, Sensor-Activated, Die-Cast Metal Hand Washing Faucet with the following features:

- One tool service
- Solenoid housed in removable carrier that includes supply strainer
- Integral water supply shut off
- Vandal resistant spray insert, key housed inside faucet body
- All electronics sealed to IP-113
- Gold plated electrical contacts
- Above deck individual diagnostic indicators for battery life, solenoid condition, and power-up mode
- Flexible, high pressure supply hose, 3/8" compression connections
- Bi-stable magnetic solenoid
- Four (4) "AA" alkaline batteries
- Double infrared sensors with automatic setting feature
- Includes all mounting hardware
- Standard Bowed Crown

ELECTRICAL SPECIFICATIONS

- Battery Life: 3 years 8,000 cycles/month
- Optional power harvesting significantly extends service life
- Self-Adjustment Range: 2" – 14" (51 – 356mm)
- Sensor Range: 4" – 5" (102 – 127mm)
- Timeout Adjustment Settings: 10s

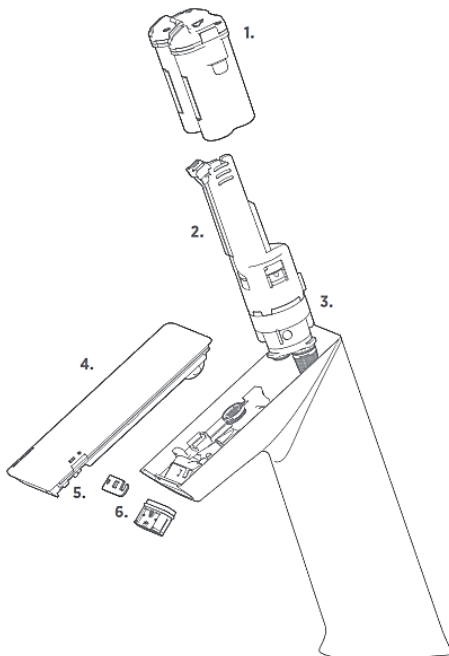
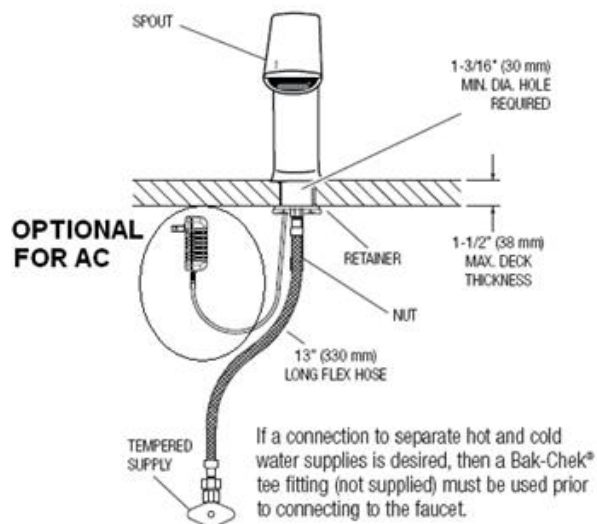
OPERATION

1. A continuous, invisible light beam is emitted from the sensor located at the front of the hand washing faucet.
2. As the user's hands enter the beam's effective range, the beam is reflected back into the sensor receiver and activates the solenoid valve allowing water to flow from the faucet. Water will flow until the hands are no longer sensed or until the faucet reaches its automatic time out limit setting.
3. When hands are moved away from the sensor, the loss of reflected light initiates an electrical signal that closes the solenoid valve shutting off the water flow. The circuit then automatically resets and is ready for the next user.



ROUGH-IN

Faucet with Single Line Water Supply



1. Battery caddy

Easily accessible and watertight.

2. Valve caddy/water shut-off

Shuts off water supply with one twist, without having to go below the sink.

3. Solenoid + filter

Bi-stable solenoid with integrated filter.

4. Removable crown

Upgrade product features in seconds.

5. External Indicators

Individual external diagnostic LEDs help quickly identify faucet status.

6. Exchange tool + spray Insert

Allows operators to remove, clean and replace the spray.

Note:

* All information of the above is for the reference only. No prior notice is made if any changes.